

PLATE I.1

1a,b	<i>Phyllocladus</i> (Podocarpaceae)	YAN 2, 990 cm
2,3	<i>Podocarpus</i> (Podocarpaceae)	YAN 2, 476 cm
4	<i>Dacrycarpus</i> T. (Podocarpaceae)	YAN 2, 830 cm
5	cf. <i>Cananga odorata</i> (Annonaceae)	SS 18
6a,b,c	cf. <i>Gnetum</i> (Gnetaceae)	SS 13-15
7a,b,c	<i>Pandanus radula</i> T. (Pandanaeae)	YAN 2, 1030 cm
8a,b	cf. <i>Colocasia</i> (Araceae)	LW II, 1930 cm
9	Unknown 274	PT 4
10	? <i>Normanbya</i> T. (Palmae)	SS 18
11a,b	cf. Liliaceae	YAN 2, 160 cm

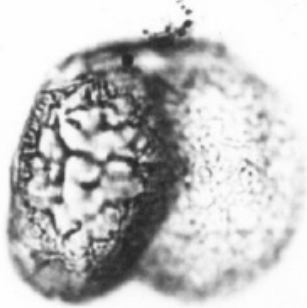
PLATE I.1



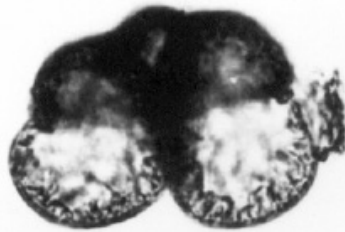
1a



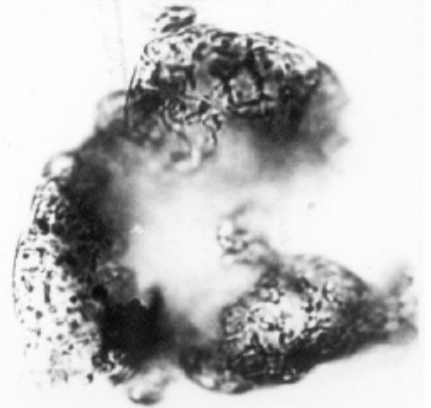
1b



2



3



4



5



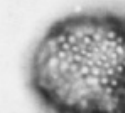
6a



6b



6c



7a



7b



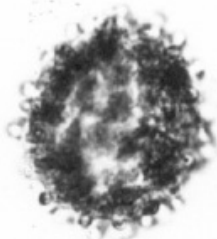
7c



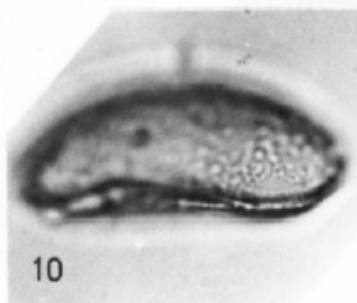
8a



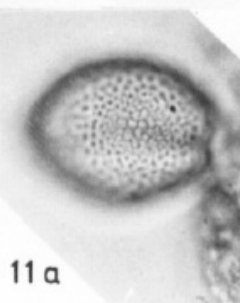
8b



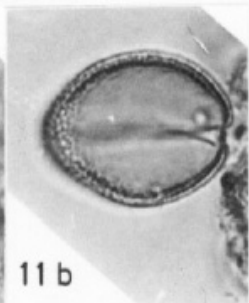
9



10



11a



11b



PLATE I.2

12a,b	?Palmae	PT 4
13a,b	cf. <i>Arenga</i> (Palmae)	PT 4
14a,b	Unknown 156	YAN 2, 1150 cm
15a,b	Gramineae 3	
16a,b	Gramineae 5	LW II, 1490 cm
17a,b	<i>Flagellaria</i> (Flagellariaceae)	YAN 2, 160 cm
18a,b,c	<i>Sparganium antipodum</i> T. (Sparganiaceae)	LW II, 1970 cm
19	<i>Typha</i> (Typhaceae)	LW II, 730 cm
20a,b	Unknown 292	PT 1
21a,b,c	<i>Hypolytrum nemorum</i> T. (Cyperaceae)	LW II, 1346 cm
22	Cyperaceae A1	SS 23
23	Cyperaceae B2	YAN 2, 870 cm
24a,b	<i>Calamus</i> (Palmae)	YANMC 1 SS
25a,b	? <i>Metroxylon sagu</i> (Palmae)	YAN 2, 920 cm

PLATE I.2

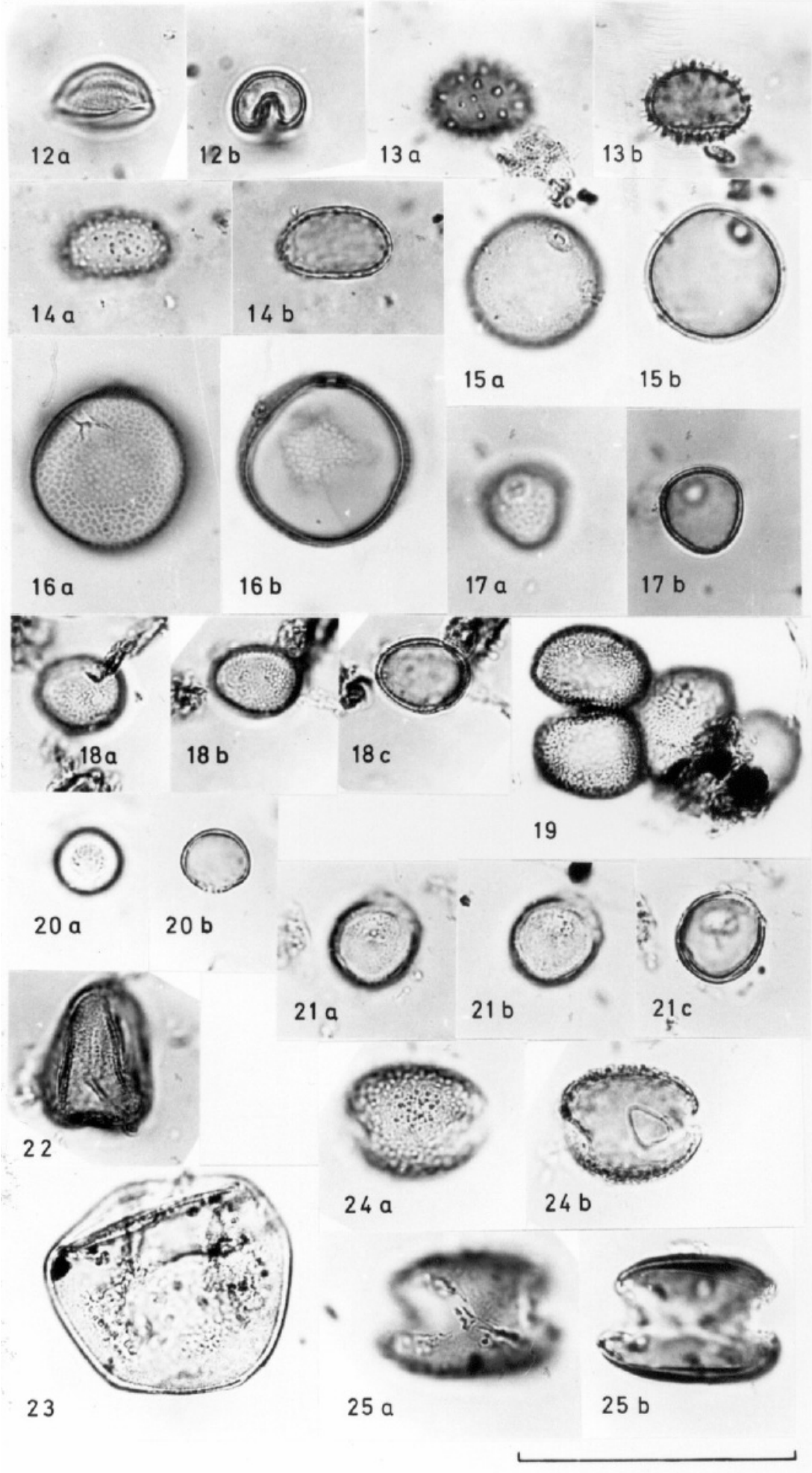
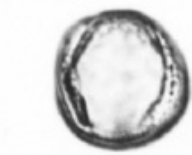


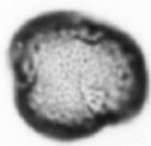
PLATE I.3

26a,b	<i>Anisoptera</i> T. (Dipterocarpaceae)	YAN 2, 320 cm
27a,b	<i>Anisoptera</i> T. (Dipterocarpaceae)	LW II, 1890 cm
28a,b	<i>Dysophylla</i> T. (Labiatae)	SS 23
29	<i>Dysophylla</i> T. (Labiatae)	LW II, 1907 cm
30a,b,c	cf. Verbenaceae/Bignoniaceae	YAN 2, 200 cm
31a,b,c	<i>Timonius</i> T. (Rubiaceae)	YAN 2, 910 cm
32a,b	<i>Nelumbo nucifera</i> (Nymphaeaceae)	LW II, 685 cm

PLATE I.3



26 a



26 b



27 a



27 b



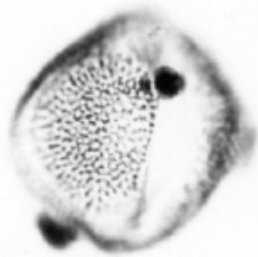
28 a



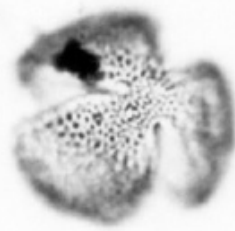
28 b



29



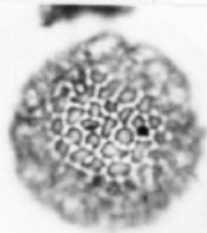
30 a



30 b



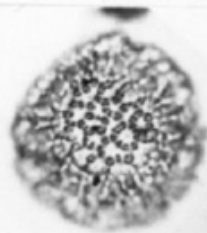
30 c



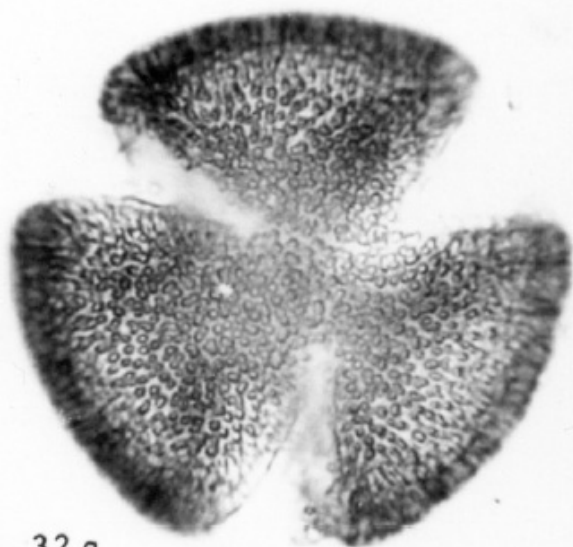
31 a



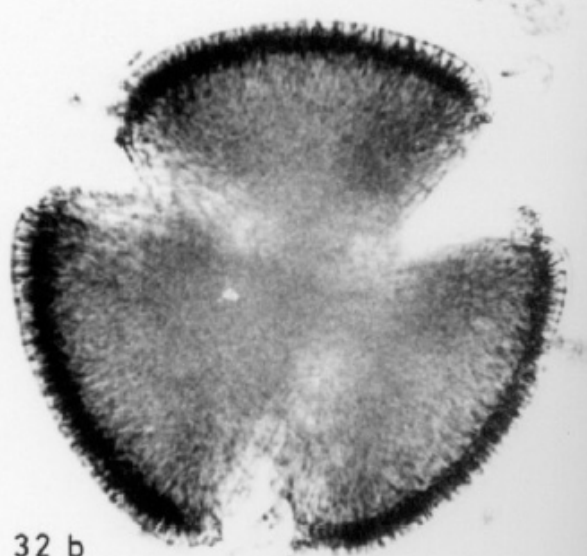
31 b



31 c



32 a



32 b



PLATE I.4

33a,b,c, 34a,b	<i>Ilex</i> (Aquifoliaceae)	LW II, 1530 cm
35a,b	<i>Endospermum</i> (Euphorbiaceae)	PT 4
36a,b	Unknown 235	YAN 2, 670 cm
37a,b	Unknown 293	PT 1
38a,b	cf. <i>Myrsine</i> T. (Myrsinaceae)	SQ 40
39	cf. <i>Myrsine</i> T. (Myrsinaceae)	YAN 2, 1030 cm
40a,b,c	<i>Nothofagus</i> (Fagaceae)	YAN 2, 1030 cm
41a,b,c	<i>Elaeocarpus</i> T. (Elaeocarpaceae)	PT 1
42a,b,c,d	<i>Octomeles sumatrana</i> (Datisceae)	LW II, 1980 cm
43a,b,c	<i>Macaranga ovatifolia</i> T. (Euphorbiaceae)	PT 1
44a,b,c,d	<i>Macaranga</i> (Euphorbiaceae)	LW II, 1490 cm
45a,b	<i>Macaranga</i> (Euphorbiaceae)	LW II, 730 cm
46a,b	Rhamnaceae	YAN 2, 400 cm
47a,b	Rhamnaceae	YAN 2, 910 cm

PLATE I.4

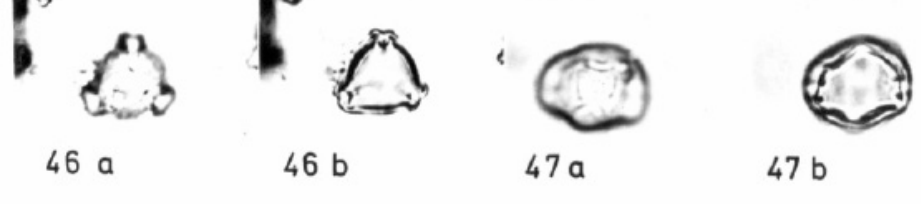
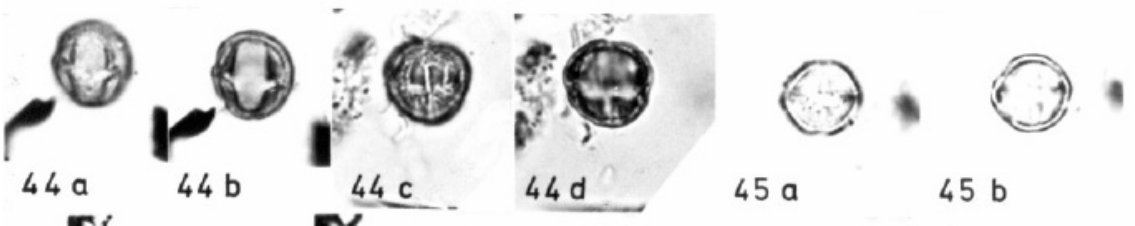
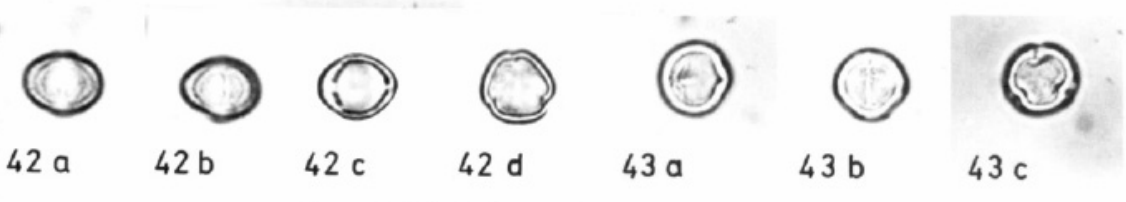
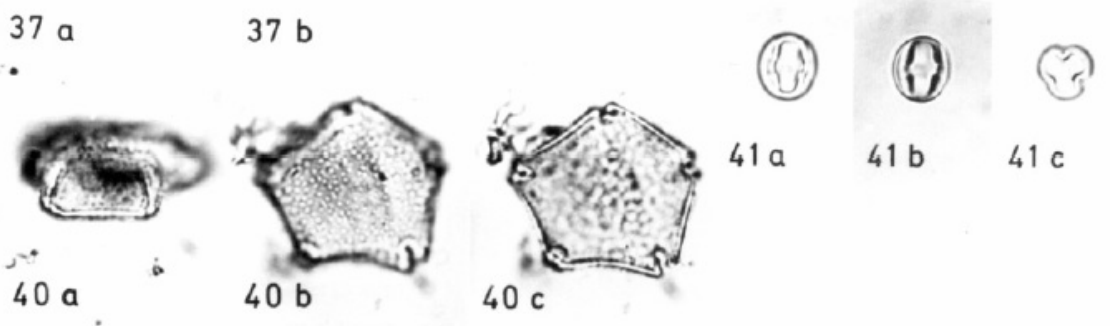
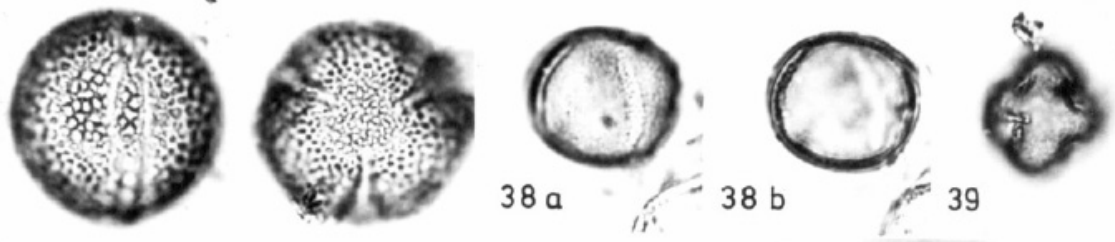
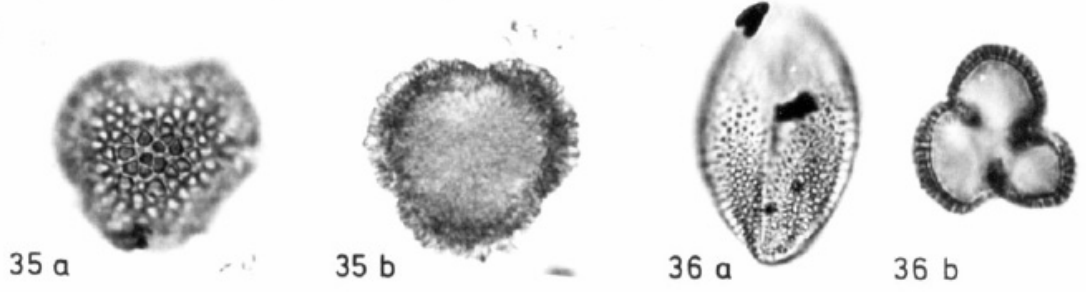
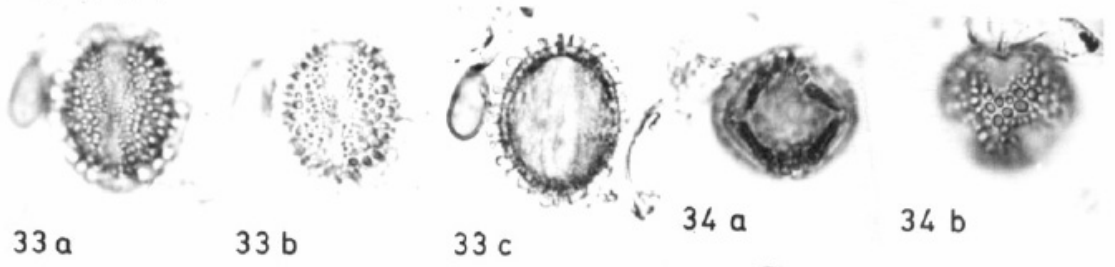


PLATE I.5

48a,b,c	<i>Spiraeopsis</i> T. (Cunoniaceae)	LW II, 685 cm
49a,b	<i>Weinmannia</i> T. (Cunoniaceae)	PT 1
50a,b,c	<i>Hypserpa</i> (Menispermaceae)	LW II, 1610 cm
51	<i>Uncaria</i> T. (Rubiaceae)	LW II, 1530 cm
52	<i>Uncaria</i> T. (Rubiaceae)	SQ 40
53a,b,c	<i>Nauclea</i> T. (Rubiaceae)	LW II, 1490 cm
54a,b,c	<i>Tetracera</i> T. (Dilleniaceae)	PT 1
55a,b,c,d	<i>Olea</i> (Oleaceae)	YAN 2, 1070 cm
56	<i>Rapanea</i> cf. <i>achradaefolia</i> T. (Myrsinaceae)	YAN 2, 830 cm
57a,b	Unknown 194	YAN 2, 160 cm
58	Unknown 109	LW II, 1970 cm
59a,b	Unknown 104	LW II, 1970 cm
60a,b,c,d	Unknown 60	LW II, 1770 cm
61a,b, 62	<i>Castanopsis</i> T. (Fagaceae)	PT 1
63a,b,c	<i>Rhizophora apiculata</i> T. (Rhizophoraceae)	LW II, 790 cm
64a,b,c	cf. <i>Crotalaria</i> T. (Leguminosae)	LW II, 685 cm
65a,b	?Leguminosae (Papilionatae) B	YAN 2, 240 cm
66a,b,c,d,e	cf. <i>Bischofia</i> (Euphorbiaceae)	LW II, 685 cm
67	cf. <i>Bischofia</i> (Euphorbiaceae)	YAN 2, 990 cm

PLATE I.5

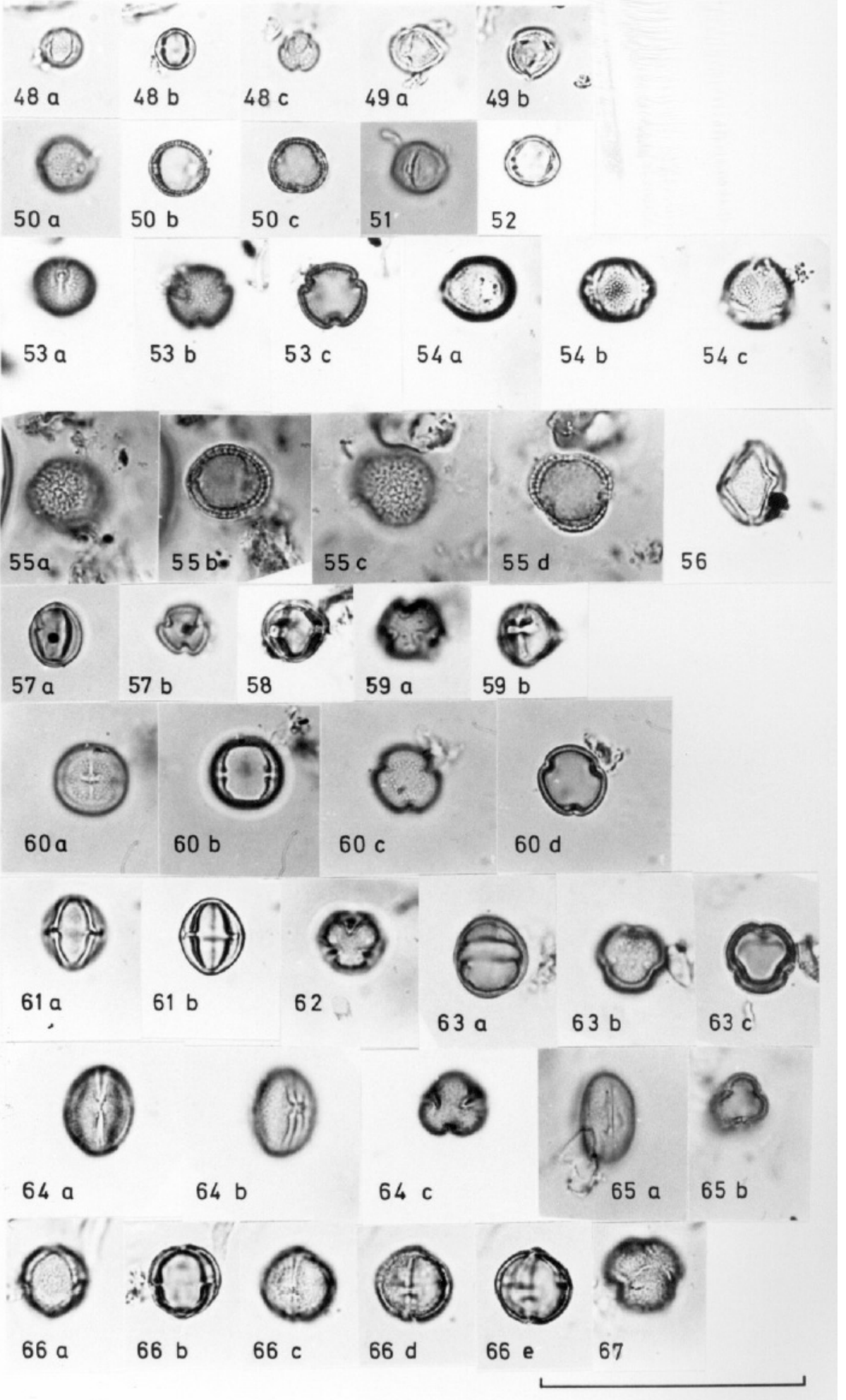


PLATE I.6

68	<i>Antidesma</i> (Euphorbiaceae)	LWMC 3 SS
69a,b	<i>Antidesma</i> (Euphorbiaceae)	YAN 2, 910 cm
70a,b,c	<i>Euphorbia hirta</i> T. (Euphorbiaceae)	LW II, 730 cm
71a,b	cf. <i>Euphorbia</i> (Euphorbiaceae)	LW II, 790 cm
72a,b,c	<i>Rhus</i> T. (Anacardiaceae)	YAN 2, 670 cm
73a,b,c	<i>Diospyros</i> cf. <i>ferrea</i> (Ebenaceae)	SS 18
74	<i>Planchonella</i> T. (Sapotaceae)	LW II, 1810 cm
75	<i>Planchonella</i> T. (Sapotaceae)	PT 4
76	cf. <i>Palaquim</i> (Sapotaceae)	YANMC 1 SS
77a,b	Unknown 79	LW II, 790 cm
78	Unknown 79	LW II, 730 cm
79a,b	Unknown 119	LW II, 1346 cm
80a,b	Unknown 174	YAN 2, 1030 cm
81a,b,c	cf. Euphorbiaceae	LW II, 1930 cm
82a,b,c	<i>Mallotus</i> T. (Euphorbiaceae)	LW II, 790 cm
83a,b	<i>Cleidion</i> T. (Euphorbiaceae)	YAN 2, 670 cm
84a,b,c	cf. <i>Muehlenbeckia</i> (Polygonaceae)	LW II, 1346 cm

PLATE I.6

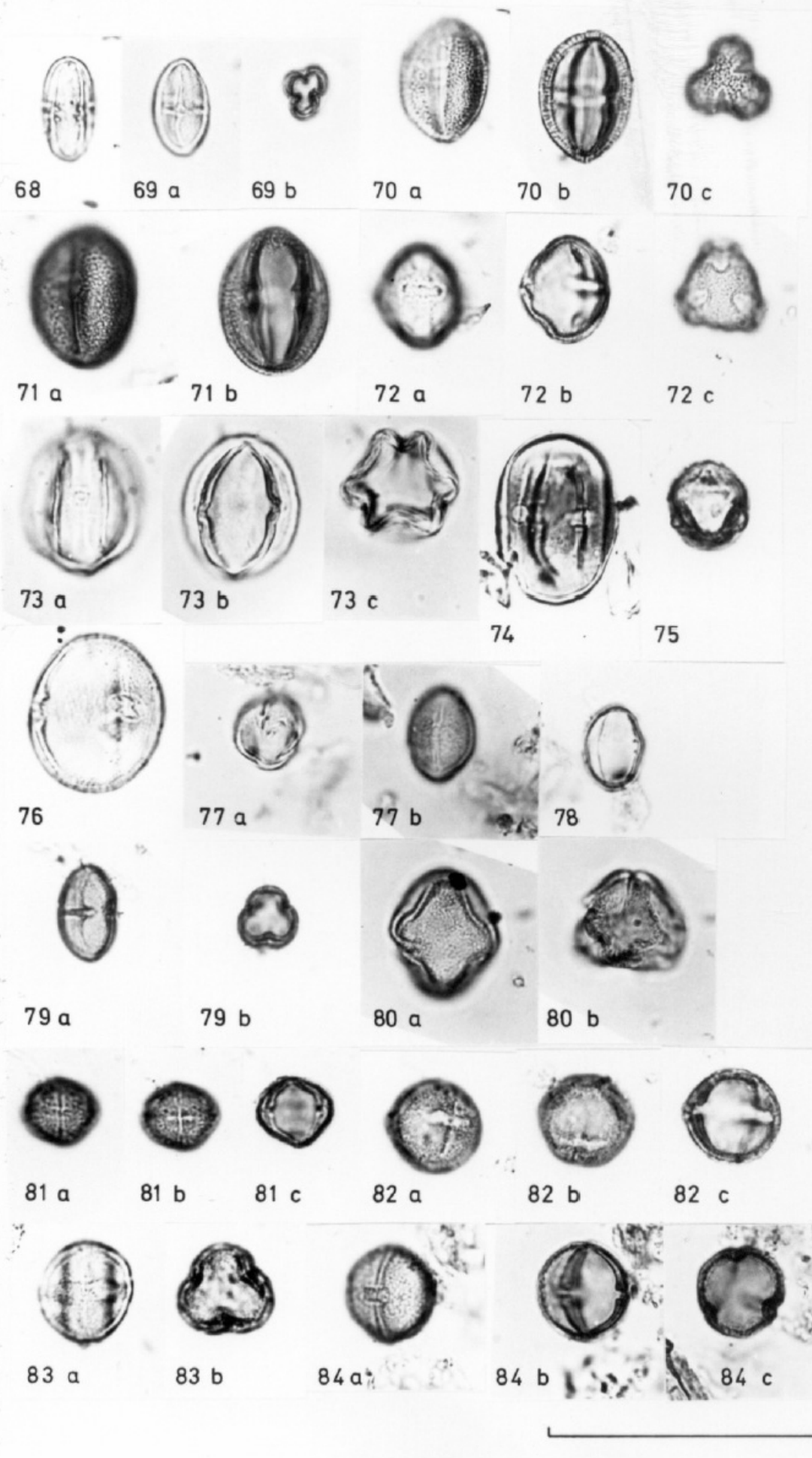


PLATE I.7

85a,b,c	cf. <i>Rumex brownii</i> (Polygonaceae)	YAN 2 830 cm
86	<i>Dodonaea</i> (Sapindaceae)	YAN 2, 240 cm
87a,b	<i>Acaena</i> (Rosaceae)	YAN 2, 910 cm
88a,b	? <i>Parinari</i> (Rosaceae)	PT 1
89a,b,c	Unknown 123	LW II, 1310 cm
90a,b	Unknown 221	YAN 2, 400 cm
91a,b	Unknown 218	YAN 2, 400 cm
92a,b,c	<i>Vandasia</i> T. (Leguminosae)	PT 5
93	cf. <i>Sterculia edelfeltii</i> (Sterculiaceae)	YAN 2, 1030 cm
94a,b	cf. <i>Sterculia edelfeltii</i> (Sterculiaceae)	YAN 2, 320 cm
95a,b,c	<i>Platea excelsa</i> (Icacinaceae)	PT 1
96a,b,c	<i>Melanolepis</i> T. (Euphorbiaceae)	PT 5
97	<i>Melanolepis</i> T. (Euphorbiaceae)	YAN 2, 320 cm
98	<i>Melanalepis</i> T. (Euphorbiaceae)	PT 5
99a,b	<i>Boerlagiodendron</i> (Araliaceae)	YAN 2, 910 cm
100	<i>Boerlagiodendron</i> (Araliaceae)	YAN 2, 670 cm
101a,b	<i>Morinda</i> (Rubiaceae)	YAN 2, 240 cm

PLATE I.7

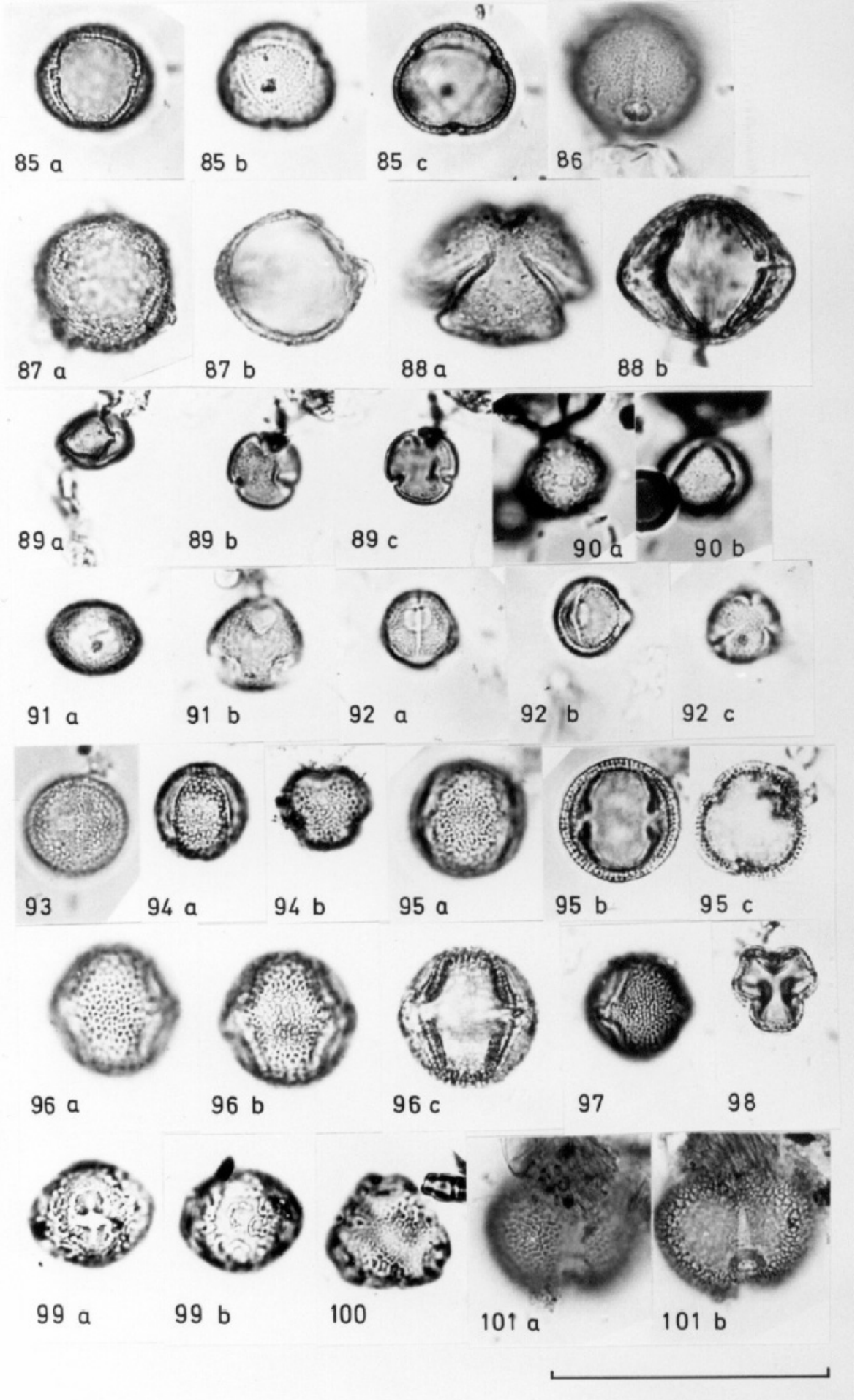


PLATE I.8

102	<i>Echium</i> cf. <i>plantagineum</i> (Boraginaceae)	YAN 2, 476 cm
103a,b	<i>Evodia</i> T. (Rutaceae)	YAN 2, 870 cm
104a,b	<i>Evodia</i> T. (Rutaceae)	SS 20
105	<i>Aporosa</i> (Euphorbiaceae)	PT 4
106a,b	<i>Aporosa</i> (Euphorbiaceae)	PT 1
107	?Leguminosae (Papilionatae) D	LW II, 1730 cm
108a,b	?Leguminosae (Papilionatae) D	YAN 2, 1030 cm
109a,b	<i>Brachychiton</i> T. (Sterculiaceae)	LW II, 1770 cm
110	<i>Microcos</i> T. (Tiliaceae)	LW II, 1770 cm
111a,b,c	<i>Trichospermum</i> (Tiliaceae)	LW II, 1730 cm
112	Rutaceae/Araliaceae T.	YAN 2, 400 cm
113a,b	Rutaceae/Araliaceae T.	YAN 2, 1150 cm
114a,b,c	Unknown 309	YANMC 1 SS
115a,b	Unknown 310	YANMC 1 SS
116	Anacardiaceae	YAN 2, 1030 cm
117	Anacardiaceae	PT 1

PLATE I.8

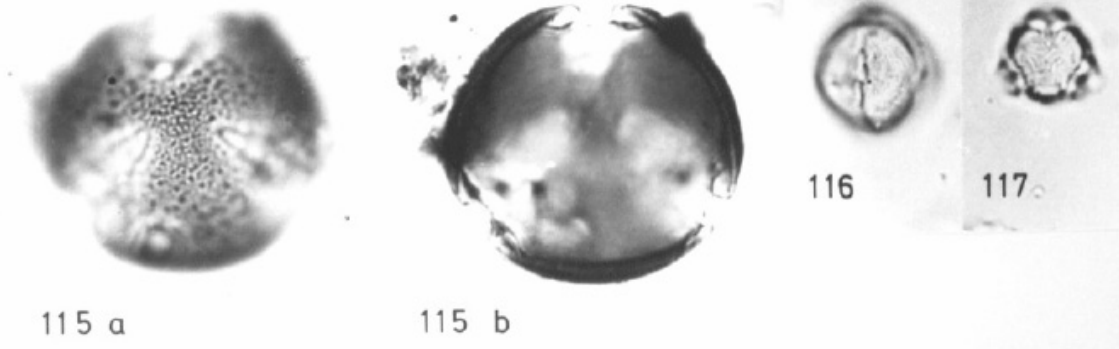
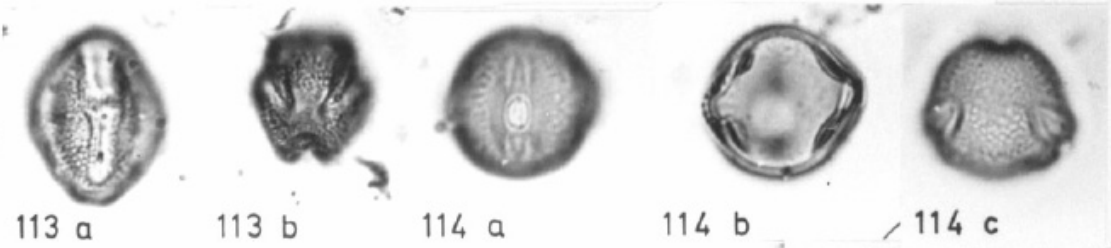
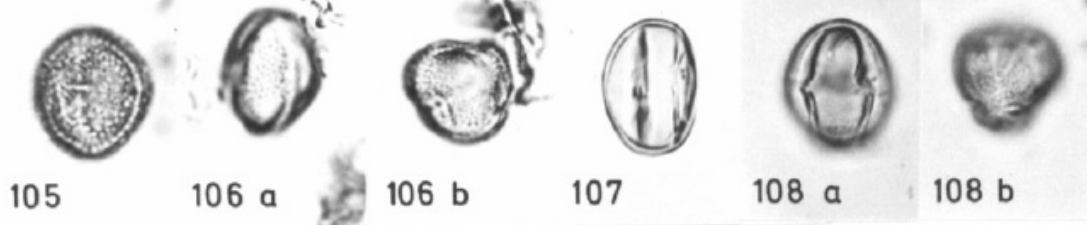
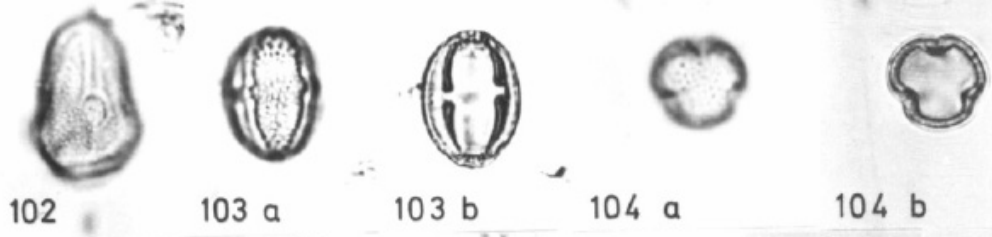


PLATE I.9

118a,b,c	cf. <i>Vitex acuminata</i> (Verbenaceae)	LW II, 685 cm
119a,b	<i>Ganophyllum falcatum</i> (Sapindaceae)	PT 4
120	<i>Ganophyllum falcatum</i> (Sapindaceae)	PT 5
121a,b,c	<i>Trichadenia philippinensis</i> (Flacourtiaceae)	LW II, 1610 cm
122a,b	Compositae (Tubuliflorae)	LW II, 910 cm
123a,b	<i>Acalypha</i> (Euphorbiaceae)	LW II, 910 cm
124	<i>Quintinia</i> (Saxifragaceae)	YAN 2, 200 cm
125	<i>Quintinia</i> (Saxifragaceae)	YAN 2, 1030 cm
126a,b	<i>Claoxylon</i> (Euphorbiaceae)	YAN 2, 790 cm
127a,b	<i>Phyllanthus</i> cf. <i>urinaria</i> (Euphorbiaceae)	LW II, 1490 cm
128	<i>Phyllanthus</i> cf. <i>urinaria</i> (Euphorbiaceae)	LW II, 1490 cm
129a,b,c	<i>Glochidion</i> T. (Euphorbiaceae)	LW II, 910 cm
130a,b,c	Unknown 106	SS 22
131a,b	? <i>Evolvulus</i> (Convolvulaceae)	YANMC 1 SS
132	?Euphorbiaceae	YAN 2, 870 cm
133	Urticaceae/Moraceae (diporate)	YAN 2, 120 cm
134	<i>Pilea</i> T. (Urticaceae)	SS 18
135a,b	<i>Streblus</i> T. (Moraceae)	LW II, 1970 cm
136a,b	<i>Trema</i> (Ulmaceae)	LW II, 1490 cm
137a,b	<i>Sphenostemon</i> cf. <i>papuanum</i> (Aquifoliaceae)	SS 22
138a,b	<i>Polyporandra scandens</i> (Icacinaceae)	SS 20

PLATE I.9

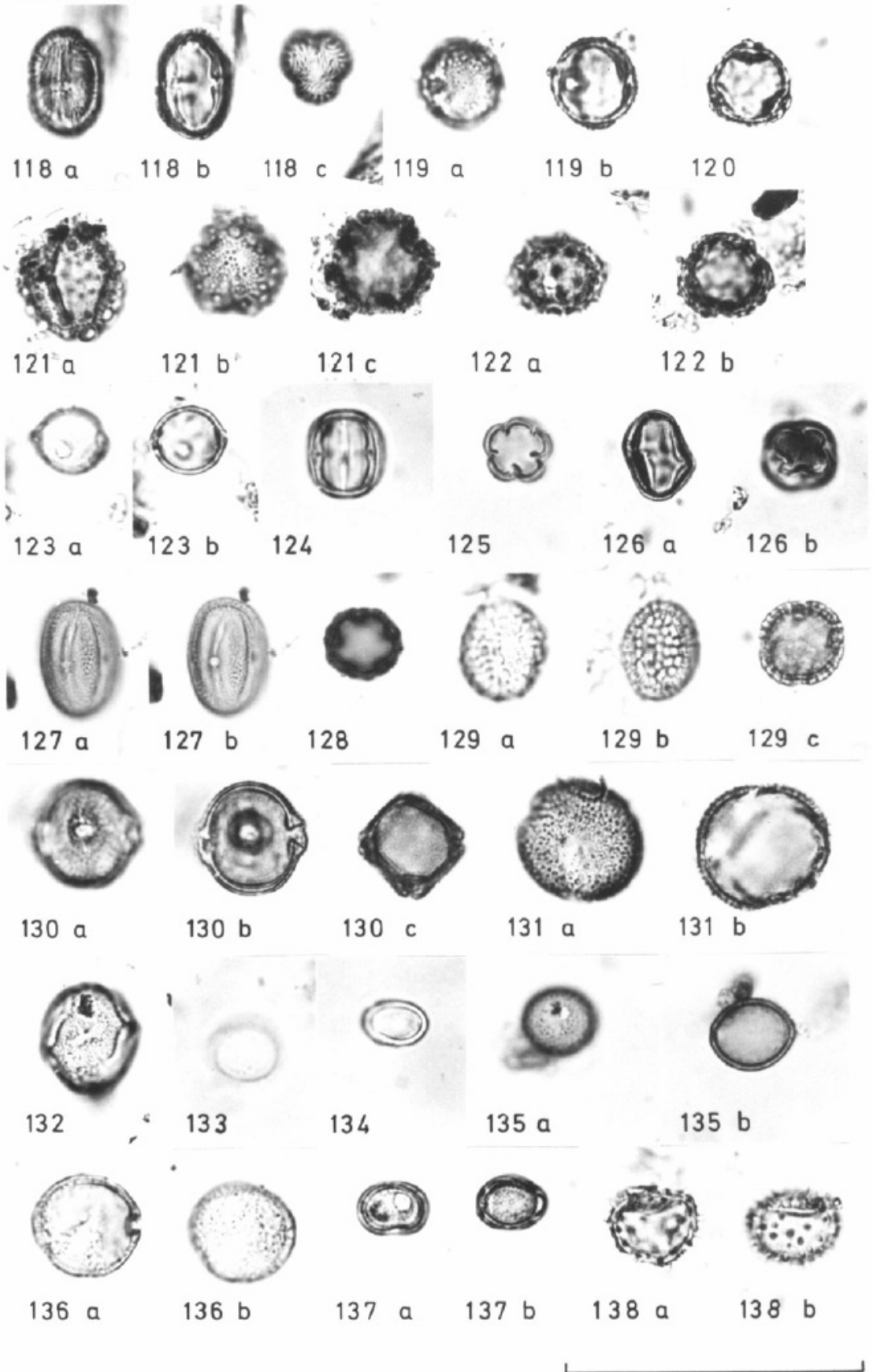
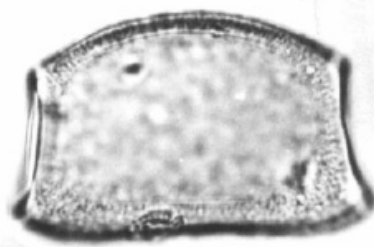


PLATE I.10

139a,b	<i>Alyxia</i> (Apocynaceae)	PT 1
140a,b,c	Unknown 279	PT 5
141	Urticaceae/Moraceae (triporate)	PT 5
142a,b	<i>Stemonurus</i> (Icacinaceae)	PT 1
143a,b	<i>Helicia</i> (Proteaceae)	SS 20
144a,b	<i>Celtis</i> (Ulmaceae)	YAN 2, 950 cm
145a,b	cf. <i>Engelhardtia</i> (Juglandaceae)	LW II, 1010 cm
146	<i>Casuarina</i> (Casuarinaceae)	PT 1
147a,b	<i>Haloragis</i> (Haloragaceae)	YAN 2, 1030 cm
148	<i>Polyosma</i> (Saxifragaceae)	PT 1
149	<i>Polyosma</i> (Saxifragaceae)	PT 1
150	<i>Sonneratia caseolaris</i> (Sonneratiaceae)	LW II, 1980 cm
151	<i>Sonneratia caseolaris</i> (Sonneratiaceae)	LW II, 790 cm
152	<i>Sonneratia caseolaris</i> (Sonneratiaceae)	PT 5
153a,b,c	<i>Stephania japonica</i> (Menispermaceae)	PT 4



139 a



139 b



140 a



140 b



140 c



141



142 a



142 b



143 a



143 b



144 a



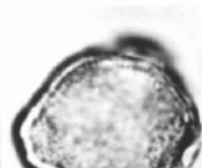
144 b



145 a



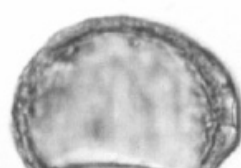
145 b



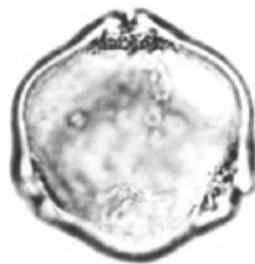
146



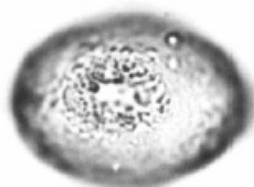
147 a



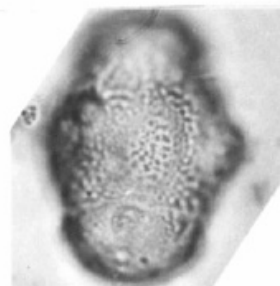
147 b



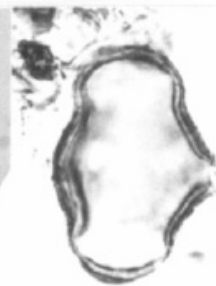
148



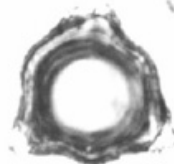
149



150



151



152



153 a



153 b



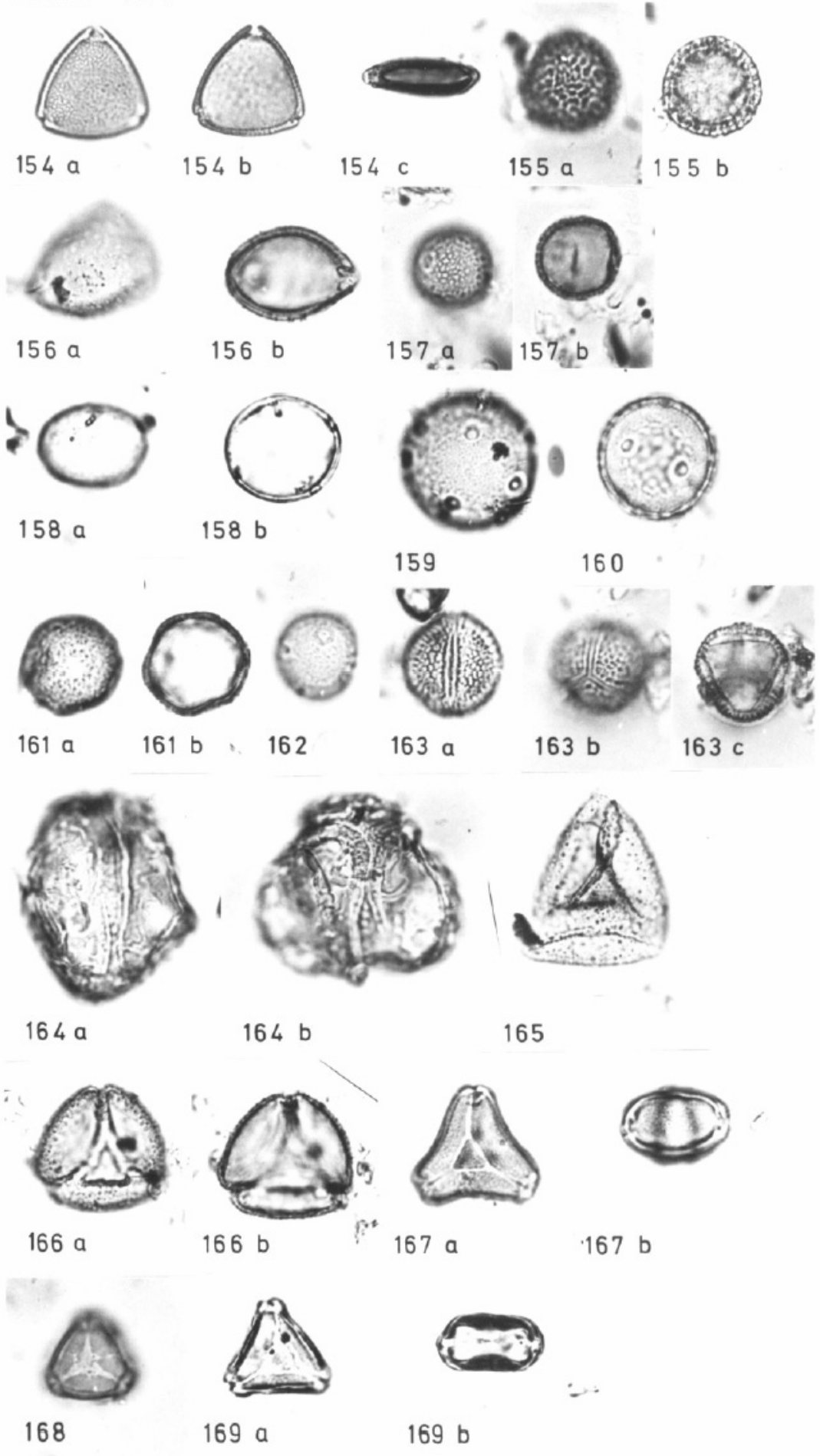
153 c



PLATE I.11

154a,b,c	<i>Kleinhovia hospita</i> (Sterculiaceae)	PT 4
155a,b	cf. <i>Sterculia</i> (Sterculiaceae)	PT 5
156a,b	<i>Symplocos</i> (Symplocaceae)	YAN 2, 1030 cm
157a,b	Unknown 147	YAN 2, 240 cm
158a,b	cf. <i>Aphananthe</i> (Ulmaceae)	YAN 2, 990 cm
159	<i>Plantago</i> (Plantaginaceae)	YAN 2, 560 cm
160	<i>Plantago</i> (Plantaginaceae)	LW II, 870 cm
161a,b	cf. <i>Trimenia</i> (Monimiaceae)	LWMC 3 SS
162	Unknown 290	PT 1
163a,b,c	<i>Tinospora</i> (Menispermaceae)	PT 4
164a,b	<i>Barringtonia</i> T. (Barringtoniaceae)	SS 18
165	<i>Nymphoides</i> (Gentianaceae)	LW II, 1530 cm
166a,b	<i>Nymphoides</i> (Gentianaceae)	LW II, 1530 cm
167a,b	<i>Tristiropsis</i> T. (Sapindaceae)	PT 4
168	Myrtaceae	LW II, 1490 cm
169a,b	Myrtaceae	YAN 2, 990 cm

PLATE I.11



154 a

154 b

154 c

155 a

155 b

156 a

156 b

157 a

157 b

158 a

158 b

159

160

161 a

161 b

162

163 a

163 b

163 c

164 a

164 b

165

166 a

166 b

167 a

167 b

168

169 a

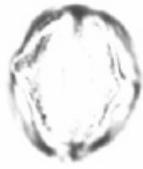
169 b



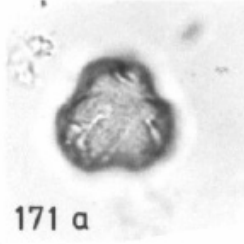
PLATE I.12

170	<i>Poikilogyne</i> T. (Melastomataceae)	LW II, 1191 cm
171a,b	<i>Poikilogyne</i> T. (Melastomataceae)	YAN 2, 120 cm
172a,b	Combretaceae/Melastomataceae	SQ 40
173a,b	Combretaceae/Melastomataceae	YAN 2, 120 cm
174a,b	<i>Gardenia</i> (Rubiaceae)	SS 13-15
175a,b	Epacridaceae	YAN 2, 1030 cm
176a,b,c	<i>Drimys</i> T. (Winteraceae)	YAN 2, 1030 cm
177a,b	<i>Nepenthes</i> (Nepenthaceae)	LW II, 870 cm
178	Monolete psilate spore, larger than 30 um	SS 13-15
179	<i>Microsorium</i> T. (Polypodiaceae)	LW II, 790 cm

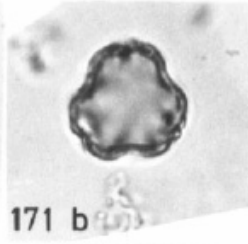
PLATE I.12



170



171 a



171 b



172 a



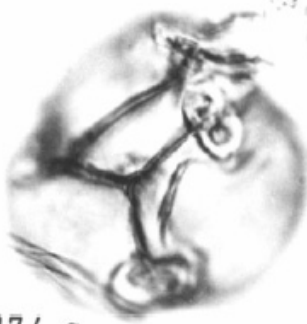
172 b



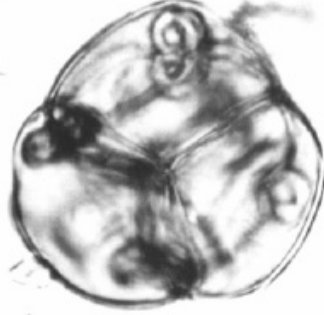
173 a



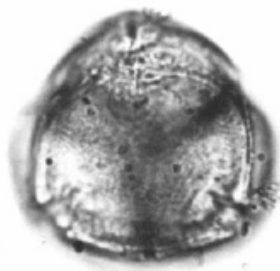
173 b



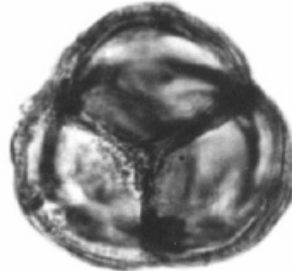
174 a



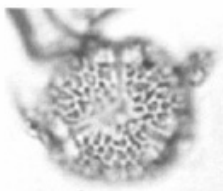
174 b



175 a



175 b



176 a



176 b



176 c



177 a



177 b



178



179



PLATE I.13

180a,b	<i>Nephrolepis</i> (Oleandraceae)	LW II, 1110 cm
181a,b	<i>Cyclosorus</i> T. (Thelypteridaceae)	PT 1
182	<i>Histiopteris incisa</i> T. (Dennstaedtiaceae)	LW II, 1810 cm
183	<i>Davallia</i> T. (Davalliaceae)	LW II, 1730 cm
184a,b	<i>Stenochaena palustris</i> (Blechnaceae)	LW II, 1890 cm
185a,b	cf. <i>Tectaria</i> (Aspidaceae)	YAN 2, 1030 cm
186a,b	<i>Stenochlaena laurifolia</i> (Blechnaceae)	SS 18
187a,b	<i>Asplenium</i> T. (Aspleniaceae)	YAN 2, 710 cm

PLATE I. 13



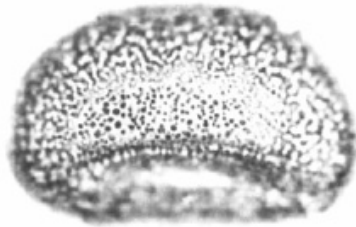
180 a



180 b



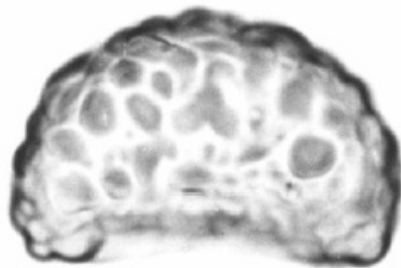
182



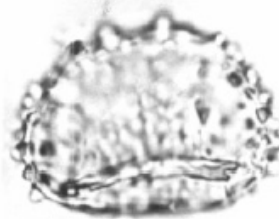
181 a



181 b



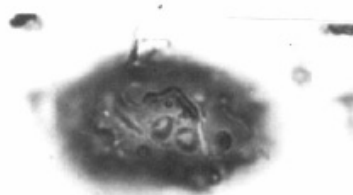
183



184 a



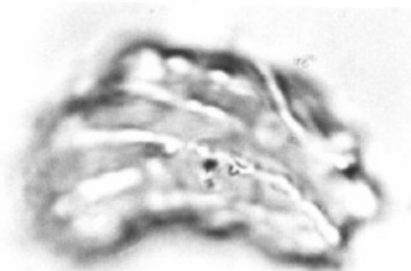
184 b



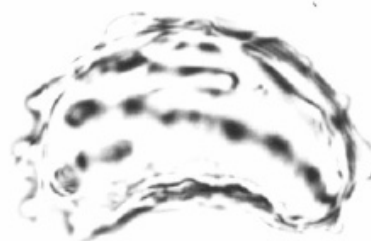
185 a



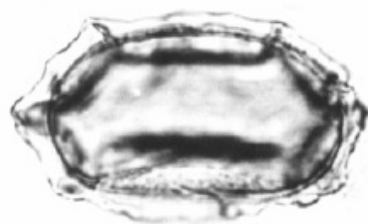
185 b



186 a



186 b



187 a

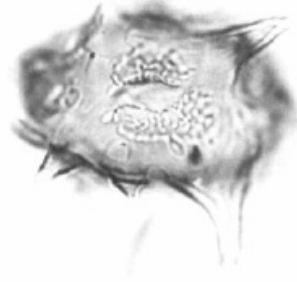


187 b

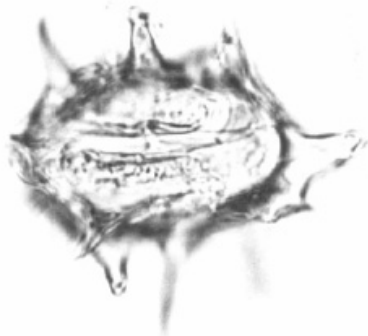


PLATE I.14

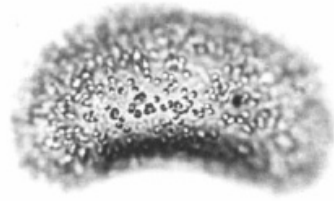
188a,b	? <i>Arthropteris</i> cf. <i>tenella</i> (Oleandraceae)	SS 18
189a,b	cf. <i>Cyclosorus archboldiana</i> T. (Thelypteridaceae)	YANMC 1 SS
190a,b	<i>Cyclosorus truncatus</i> T. (Thelypteridaceae)	YAN 2, 1030 cm
191	cf. <i>Stenochlaena areolaris</i> (Blechnaceae)	SS 23
192	Unknown 19	LW II, 1490 cm
193	cf. <i>Adiantum diaphanum</i> T. (Adiantaceae)	PT 4
194	Cyatheaceae 1	LW II, 1490 cm



188 a



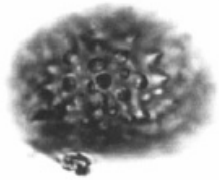
188 b



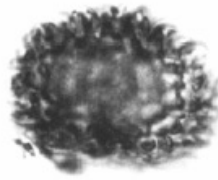
189 a



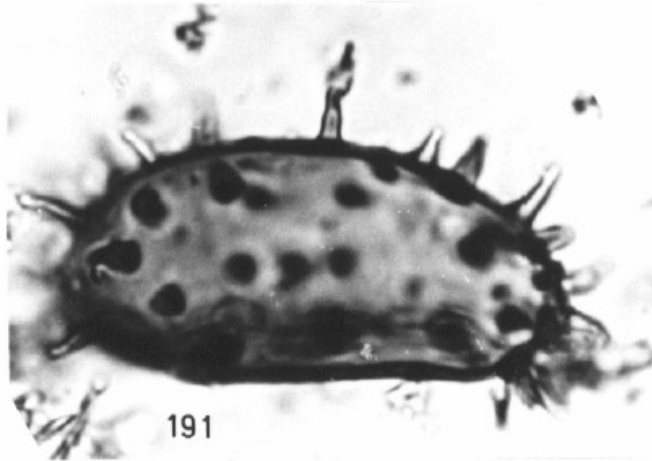
189 b



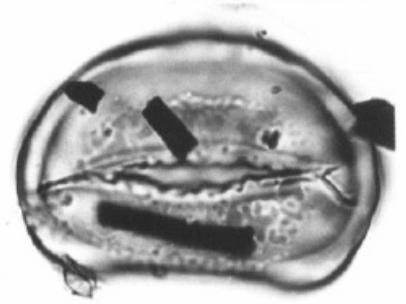
190 a



190 b



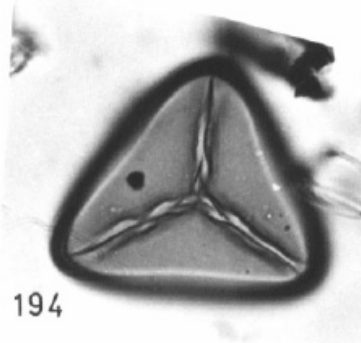
191



192



193

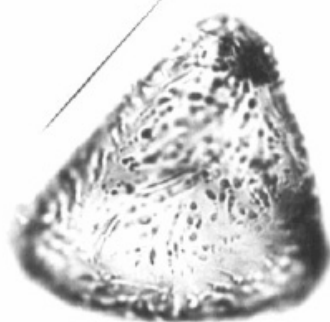


194

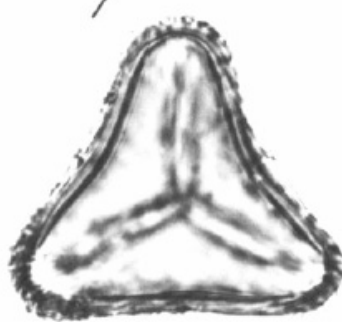


PLATE I.15

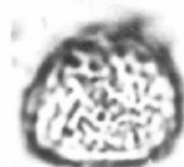
195	Cyatheaceae 2	LW II, 685 cm
196	Cyatheaceae 2	YAN 2, 670 cm
197a,b	<i>Lycopodium cernuum</i> T. (Lycopodiaceae)	PT 1
198	<i>Lycopodium squarrosum</i> T. (Lycopodiaceae)	YAN 2, 870 cm
199	<i>Lycopodium</i> cf. <i>volubile</i> T. (Lycopodiaceae)	YAN 2, 1030 cm
200, 201	<i>Pteris</i> (Pteridaceae)	LW II, 1191 cm
202	cf. <i>Anemia hirsuta</i> (Schizeaceae) (fragment)	LW II, 1870 cm



195



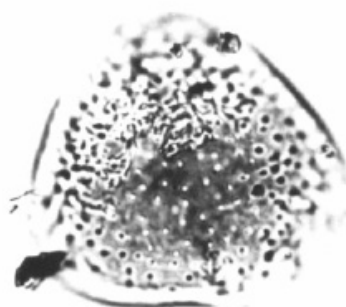
196



197 a



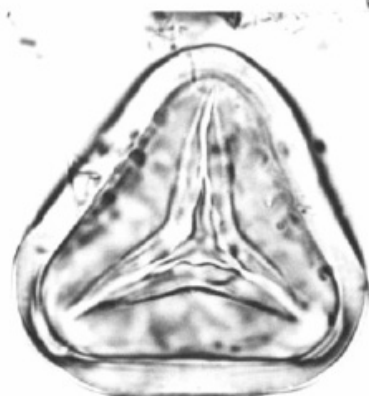
197 b



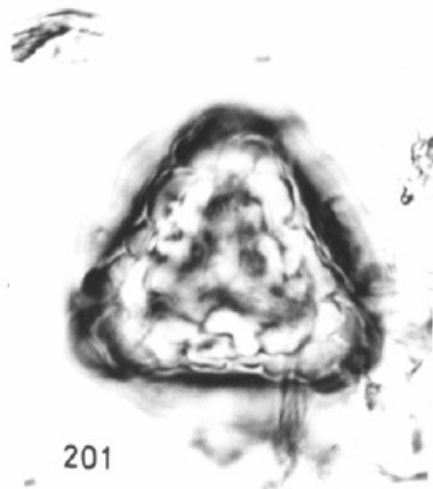
198



199



200



201



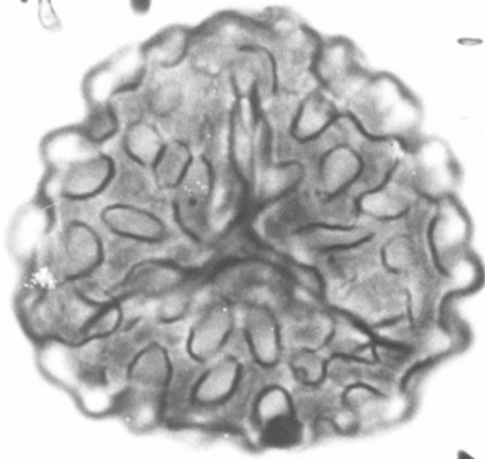
202



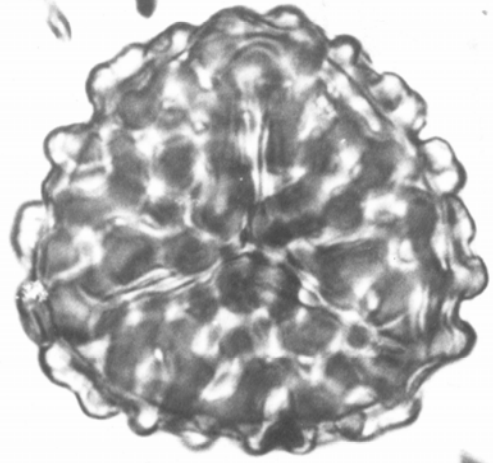
PLATE I.16

203a,b	<i>Lygodium microphyllum</i> T.	LW II, 1490 cm
204	Unknown 312	SS 27 and 28
205	Unknown 170	YAN 2, 1030 cm
206	Unknown 172	YAN 2, 790 cm

PLATE I. 16



203 a



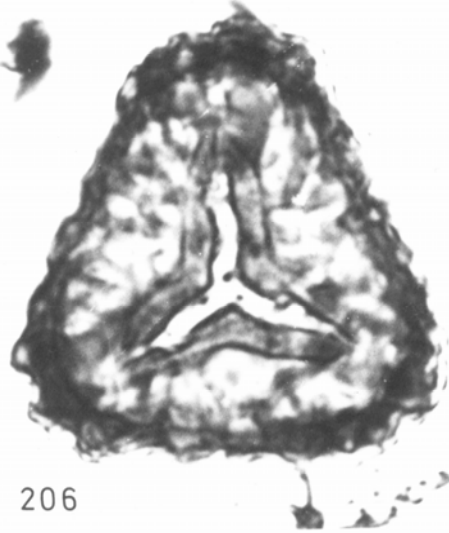
203 b



204



205



206

