

# China Update

## Conference Papers

### 1998

Copyright 1998 NCDS Asia Pacific Press  
ISSN 1441 9831

Published online by  
NCDS Asia Pacific Press  
Asia Pacific School of Economics and Management  
The Australian National University  
Canberra ACT 0200  
Australia  
Tel: 61 26249 4705  
Fax: 61 26257 2886  
Email: [publications@ncds.anu.edu.au](mailto:publications@ncds.anu.edu.au)

ASIA PACIFIC SCHOOL  
ECONOMICS AND MANAGEMENT  
THE AUSTRALIAN NATIONAL UNIVERSITY

---

Asia Pacific Press  
<http://ncdsnet.anu.edu.au/online/>

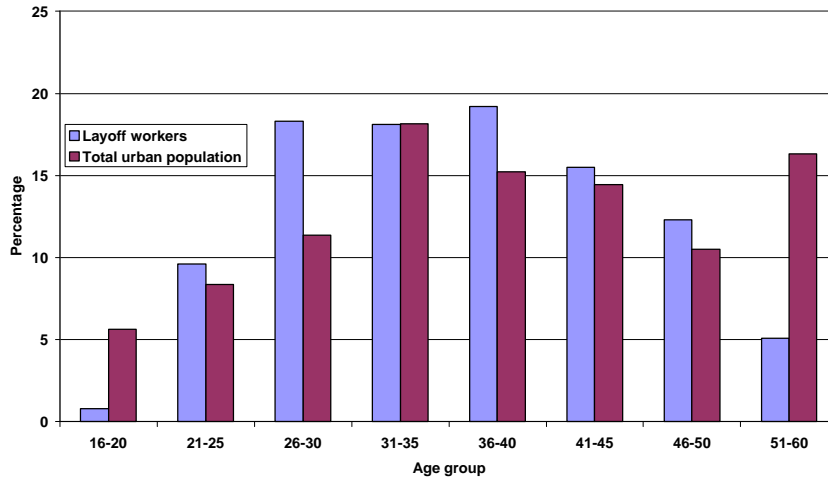


# Figures and tables

## Recent development in China's labour market

Xin Meng  
China Update 1998

**Figure 1. Age distribution of redundant workers and total urban population**



**Figure 2. Educational distribution of redundant workers and total industrial labour force**

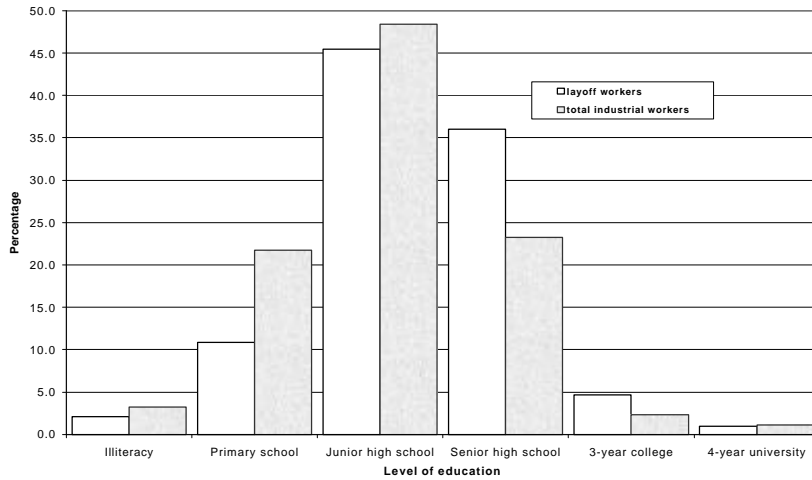


Figure 3. Income distribution before and after layoff

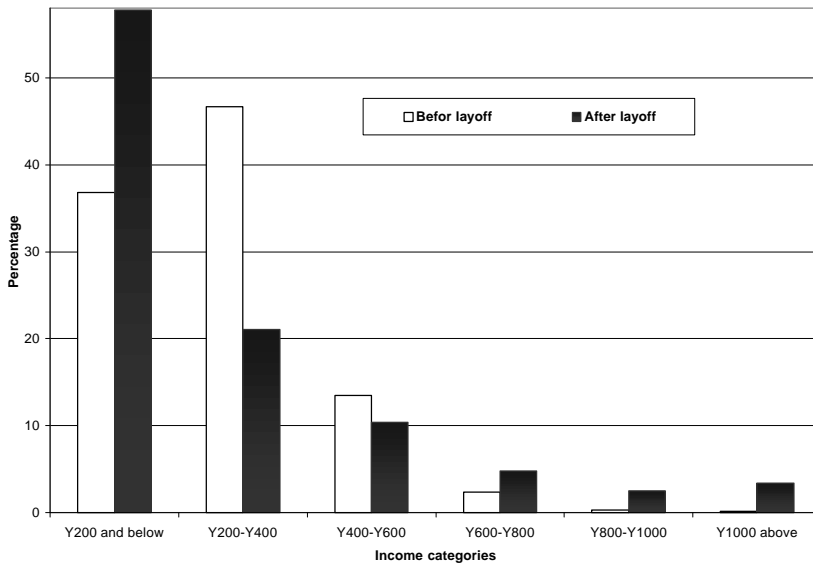


Figure 4. Age distribution of low income earners before and after being laid off

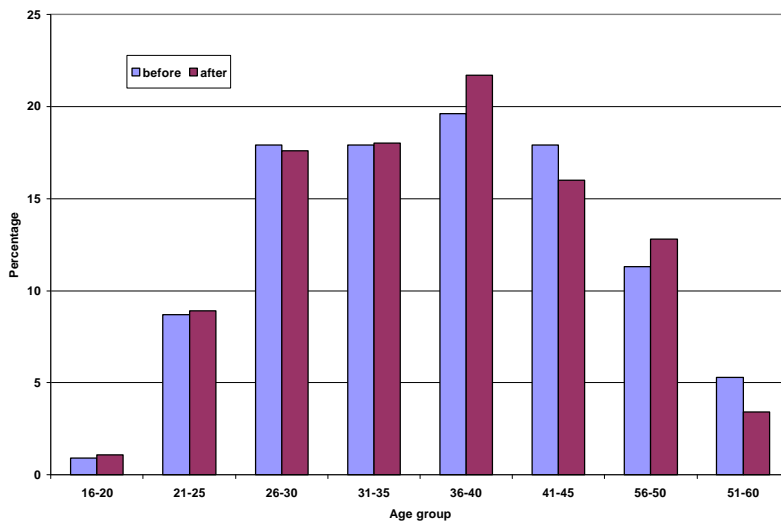


Figure 5. Educational distribution of low income earners before and after being laid off

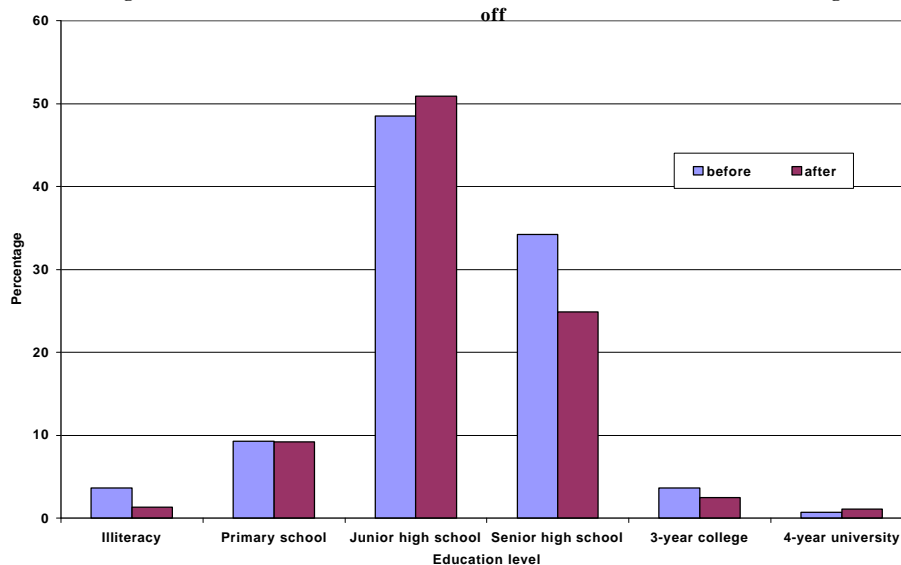


Figure 6. Regional distribution of low income earners before and after being laid off

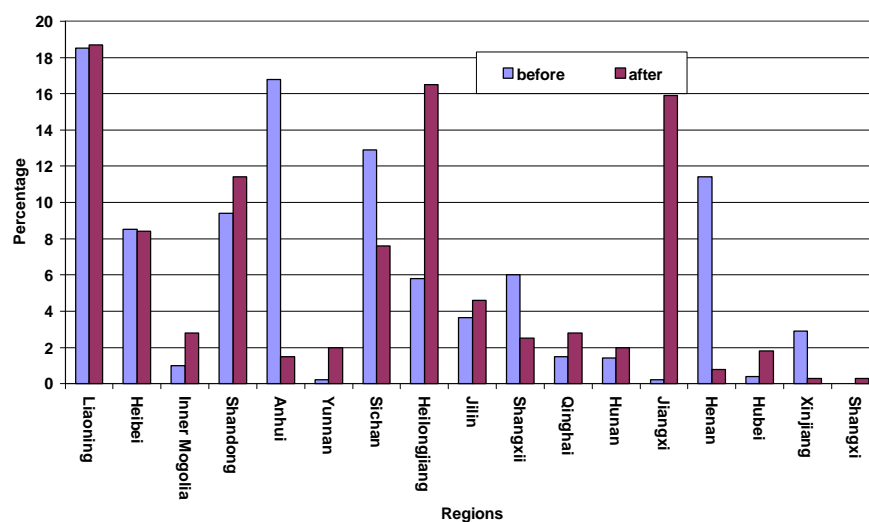


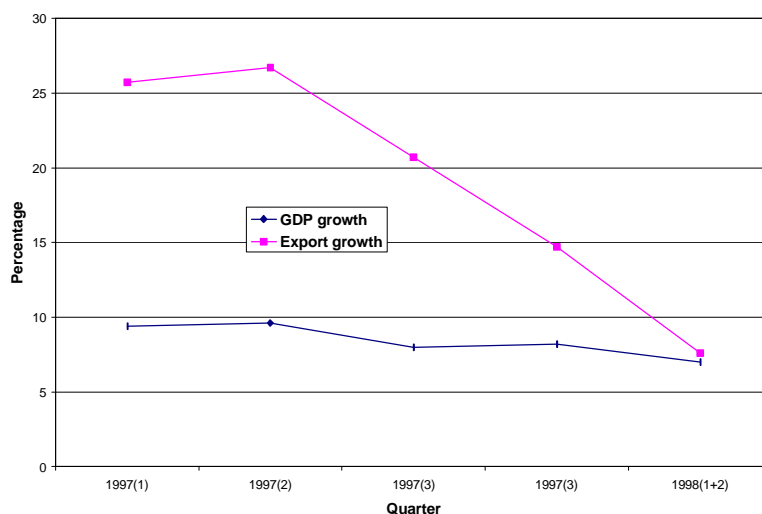
Table 1 Occupational distribution, hours worked, and earning of rural migrants and urban residents in Shanghai, 1995

|                          | Occupational distribution |       |                 |       | Hours worked by occupation |       |                 |       |
|--------------------------|---------------------------|-------|-----------------|-------|----------------------------|-------|-----------------|-------|
|                          | Migrants                  |       | Urban residents |       | Migrants                   |       | Urban residents |       |
|                          | Freq                      | %     | Freq            | %     | mean                       | SD    | Mean            | SD    |
| Prof. & technicians      | 34                        | 0.70  | 355             | 17.05 | 47.15                      | 15.56 | 41.21           | 5.52  |
| Managerial staff         | 89                        | 1.84  | 150             | 7.20  | 53.93                      | 14.76 | 40.79           | 8.47  |
| Clerical                 | 29                        | 0.60  | 234             | 11.24 | 53.86                      | 14.65 | 39.53           | 6.42  |
| Wholesale & retail trade | 1264                      | 26.07 | 149             | 7.16  | 61.03                      | 23.42 | 47.11           | 16.27 |
| Service workers          | 754                       | 15.55 | 192             | 9.22  | 58.26                      | 16.18 | 44.16           | 11.56 |
| Production workers       | 2510                      | 51.76 | 826             | 39.67 | 52.66                      | 13.24 | 41.04           | 6.96  |
| Other                    | 169                       | 3.49  | 176             | 8.45  | 54.06                      | 16.81 | 42.78           | 13.40 |

|                          |                                |        |                 |        |                               |       |                 |      |
|--------------------------|--------------------------------|--------|-----------------|--------|-------------------------------|-------|-----------------|------|
| Total                    | 4849                           | 100.00 | 2082            | 100.00 | 55.73                         | 17.43 | 41.75           | 9.16 |
|                          | Monthly earnings by occupation |        |                 |        | Hourly earnings by occupation |       |                 |      |
|                          | Migrants                       |        | Urban residents |        | Migrants                      |       | Urban residents |      |
|                          | Mean                           | SD     | Mean            | SD     | Mean                          | SD    | Mean            | SD   |
| Prof. & technicians      | 792.42                         | 530.64 | 989.69          | 435.53 | 4.18                          | 2.55  | 5.67            | 2.71 |
| Managerial staff         | 1144.62                        | 842.53 | 1147.28         | 618.52 | 5.46                          | 3.63  | 6.98            | 4.33 |
| Clerical                 | 723.21                         | 362.22 | 916.02          | 490.35 | 3.41                          | 2.24  | 5.40            | 2.66 |
| Wholesale & retail trade | 560.54                         | 660.97 | 904.26          | 484.34 | 2.68                          | 4.34  | 5.06            | 2.74 |
| Service workers          | 478.13                         | 426.53 | 823.01          | 541.79 | 2.07                          | 1.99  | 4.70            | 4.05 |
| Production workers       | 558.03                         | 243.28 | 889.62          | 507.81 | 2.58                          | 1.29  | 5.31            | 5.90 |
| Other                    | 566.91                         | 358.73 | 728.50          | 549.80 | 3.33                          | 7.12  | 4.42            | 3.61 |
| Total                    | 558.98                         | 409.38 | 911.86          | 515.82 | 2.60                          | 2.59  | 5.37            | 4.57 |

**Source:** Author's own calculations.

**Figure 7. Quarterly GDP and export growth 1997-1998**



**Table 2 OLS results from employment regression**  
(Dependent variable=Log(employment at year end))

|                           | Coefficient | T-Ratio |
|---------------------------|-------------|---------|
| Log (real GDP)            | 0.627       | 12.66   |
| Log (average annual wage) | -1.210      | -7.73   |
| Log (export)              | 0.147       | 4.01    |
| Dummy for 1993            | 0.019       | 0.31    |
| Dummy for 1994            | 0.079       | 1.27    |
| Constant                  | 9.280       | 8.87    |
| No. observation           | 90          |         |
| Adjusted R <sup>2</sup>   | 0.92        |         |

**Source:** Author's own estimation.